

LEGEND

- = CONCRETE MONUMENT SET
- = CONCRETE MONUMENT FOUND
- = MONUMENT LINE
- = 2466' CONTOUR LINE
- = 2462' CONTOUR LINE
- = 25 FT. SAFETY LINE
- = BUYDOWN AREAS
- LR = LAKE RESIDENTIAL
- TC = TOWN CENTER
- TR = TOWN RESIDENTIAL
- ◆ = MONUMENT TO BE SET
- ◆ = CALCULATED MONUMENT LOCATIONS THAT CANNOT BE SET
- = 1" REBAR WITH ALUMINUM CAP SET
- = 2" BRASS DISC SET

CONTOURS ARE AT 2 FT. INTERVALS REFERENCED TO THE STAFF GAUGE AT THE PENSTOCK.

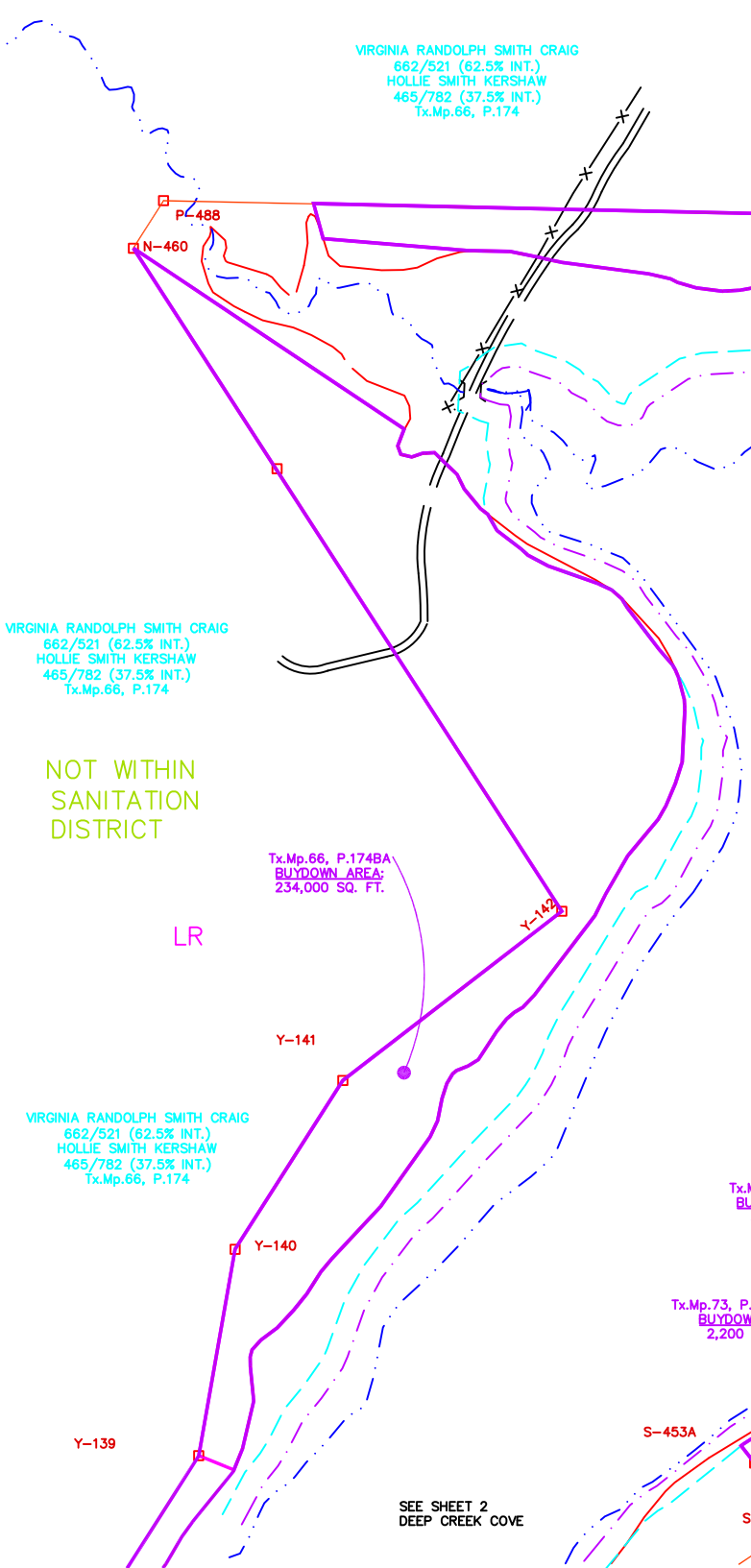
COORDINATE SCHEDULE

Mon.	North	East
S153	658224.22	661270.85
Y153	658333.01	661152.99
S185B	658381.10	661001.31
Y160	659646.30	661053.49
Y179	660166.31	661106.05
S185A	658329.88	660793.55
S453B	658091.38	660538.22
S453A	657948.60	660403.23
S153A	658178.18	661229.15
S453	657879.95	660457.04
Y180	660496.24	661404.64
Y181	660964.58	661128.57
Y159	659385.17	660522.62
Y142	658584.09	660181.17
Y141	658389.22	659929.01
Y140	658194.81	659804.97
Y139	657957.05	659763.18
N460	659347.72	659687.90
P488	659402.42	659722.57

DEEP CREEK LAKE SURVEY DATA

- HORIZONTAL DATUM**
HORIZONTAL DATUM = LAMBERT NAD 83 DATUM
NAD 83 DATUM = FIELD OBSERVATION X COMBINED SCALE FACTOR
COMBINED SCALE FACTOR = GRID SCALE FACTOR X ELEVATION SCALE FACTOR
APPROXIMATE COMBINED SCALE FACTOR = 0.99989
- VERTICAL DATUM**
VERTICAL DATUM = LAKE DATUM
LAKE DATUM = NAVD 88 DATUM - 1.80 FT.

NOT WITHIN SANITATION DISTRICT



SURVEY CALLS

CONC.MON.	BEARING	DISTANCE
Y158-S153A	N 25°49' W	784.40'
S153A-S153	N 42°10' E	62.12'
S153-Y153	N 47°17' W	160.40'
Y153-S185B	N 72°25' W	159.12'
S185B-S185A	S 76°09' W	213.97'
S185A-S453B	S 46°57' W	349.39'
S453B-S453A	S 43°24' W	196.49'
S453A-S453	S 38°05' E	87.22'
S453-N454	S 56°20' W	378.98'
#127A-Y139	N 32°29' E	650.67'
Y139-Y140	N 09°58' E	241.41'
Y140-Y141	N 32°32' E	230.60'
Y141-Y142	N 52°18' E	318.68'
Y142-N460	N 32°52' W	909.09'
N460-P488	N 32°22' E	64.76'
P488-Y159	S 88°46' E	800.23'
Y159-Y160	N 63°48' E	591.62'
Y160-#126E	N 33°18' W	26.15'
#126E-Y179	N 07°39' E	502.63'
Y179-Y180	N 42°09' E	444.98'
Y180-Y181	N 30°31' W	543.66'

PENELEC CALLS

CONC.MON.NO.	BEARING	DISTANCE
Y-158	S-153A	N 27° 06' W, 782.30 FT.
S-153A	S-153	N 41° 04' E, 63.02 FT.
S-153	Y-153	N 48° 42' W, 160.44 FT.
Y-153	S-185B	N 73° 43' W, 159.95 FT.
S-185B	S-185A	S 74° 48' W, 214.45 FT.
S-185A	S-453B	S 46° 04' W, 348.35 FT.
S-453B	S-453A	S 43° 00' W, 196.75 FT.
S-453A	S-453	S 38° 38' E, 89.19 FT.
S-453	N-454	S 43° 32' W, 539.00 FT.
#127A	Y-139	N 31° 08' E, 648.50 FT.
Y-139	Y-140	N 09° 09' E, 239.00 FT.
Y-140	Y-141	N 31° 16' E, 229.30 FT.
Y-141	Y-142	N 48° 18' E, 332.20 FT.
Y-142	N-460	N 34° 46' W, 904.30 FT.
N-460	P-488	N 37° 13' E, 63.70 FT.
P-488	Y-159	N 89° 21' E, 827.50 FT.
Y-159	Y-160	N 61° 35' E, 582.10 FT.
Y-160	#126E	N 35° 32' W, 25.70 FT.
#126E	Y-179	N 06° 06' E, 503.80 FT.
Y-179	Y-180	N 40° 28' E, 446.90 FT.
Y-180	Y-181	N 30° 32' W, 535.20 FT.
Y-181	Y-182	N 25° 34' E, 386.90 FT.

SHT. NO. 1

DRAWING 1, DEEP CREEK COVE

DEEP CREEK PROJECT
BUY DOWN SURVEY

PROJECT

Prepared By: MORGAN C. FRANCE, L.S., P.E.
MORGAN C. FRANCE, L.S., P.E.
300 West Preston Street, Room 601
Baltimore, Maryland 21201
(301) 334-2305

SERVICES - REAL ESTATE

REVISIONS

NO.	DATE	DESCRIPTION
1	7/17/00	
2	10/17/01	
3	11/02/01	

DRAWN BY: SUSAN N. EVANS PERANDI
and MARGARET A. JORDAN
DWG: DEPCRK1
123\DATA\PROJECTS\DC2000\DEPCRK1

APPROVED BY: MORGAN C. FRANCE
Plot no. 7/05/00 at 3:55
Plot date: 7/05/00 at 3:55

© COPYRIGHT - 2000 BY MORGAN C. FRANCE, L.S., P.E. ALL RIGHTS RESERVED.